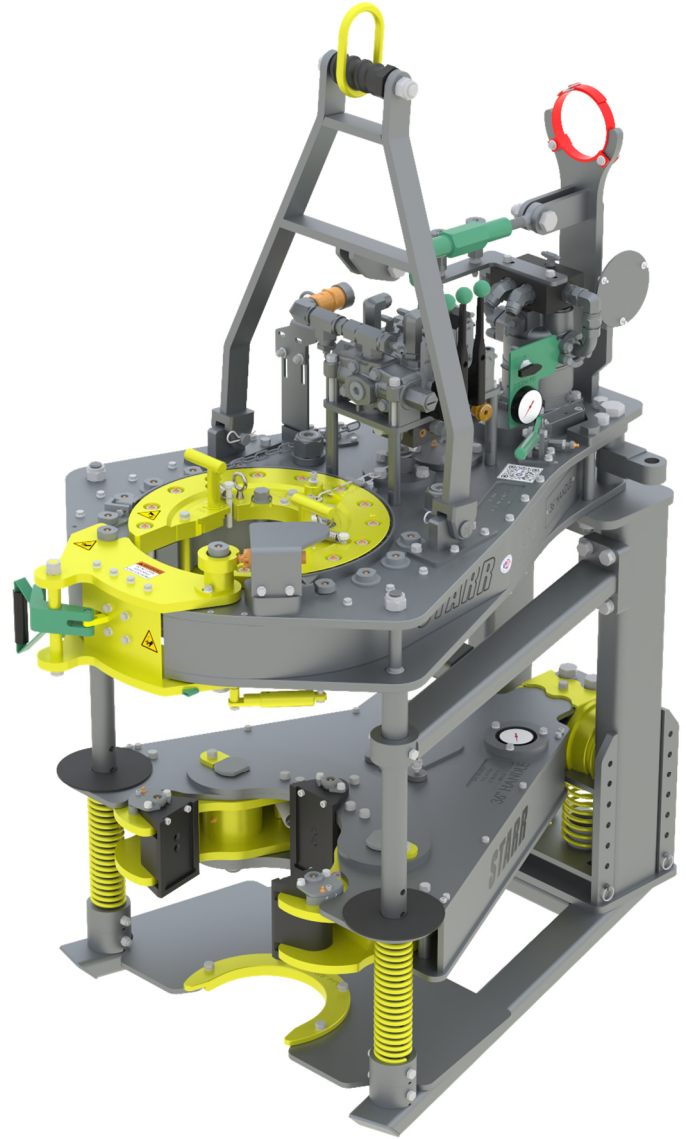
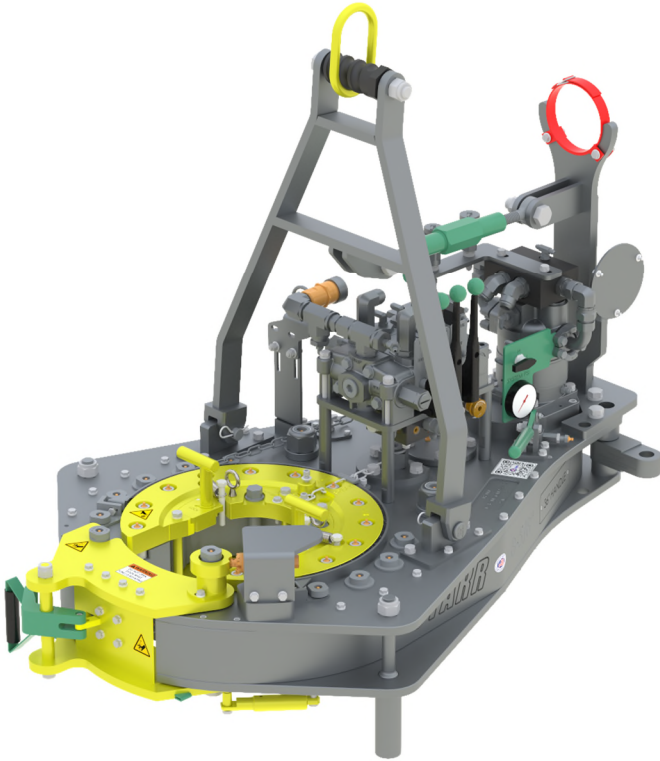




STARR
POWER TONGS

7-5/8" Quick-Chrome 30k



7-5/8" TONG	STAND ALONE	WITH BACKUP
PIPE SIZE CAPACITY	2-3/8" - 7-5/8" (Tong)	2-3/8" - 10-3/4" (Backup)
WIDTH	38.7" (98.3 cm)	40.8" (103.6 cm)
LENGTH	57" (144.8 cm)	58.6" (148.8 cm)
HEIGHT	48.4" (122.9 cm)	79.6" (202.2 cm)
WEIGHT (lb)	1,850 (840.9 kg)	2,950 (1341 kg)
RATED PRESSURE	2500 psi	
RATED TORQUE	30,000 ft-lbs (40674 Nm)	
HANDLE LENGTH	36" (91.4 cm)	

TYPICAL TESTED PERFORMANCE (69C.30.03.33.XX)

PRESSURE	SPEED 1	SPEED 2	SPEED 3	SPEED 4	FLOW	SPEED 1	SPEED 2	SPEED 3	SPEED 4
	PSI	FT-LB	FT-LB	FT-LB		FT-LB	GPM	RPM	RPM
1000	11900	5900	2300	1100	10	1	3	9	19
2000	23800	11900	4700	2300	20	3	7	19	38
2250	26800	13400	5300	2600	40	7	15	38	77
2500	29800	14900	5900	2900	60	11	23	57	115

Disclaimer: Technical Values are +/- 5% of Listed Values

Speed 1 = Low (Hydraulic) / Low (Mechanical)

Speed 2 = High / Low

Speed 3 = Low / High

Speed 4 = High / High



Stand Alone Tong Configuration

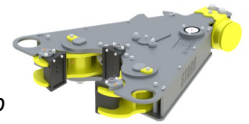


7-5/8" -30k Tong with Stand Alone Mounting Kit
P/N: 69C.30.03.33.01
Quantity: _____

Tong with Backup Configuration



7-5/8" -30k Tong with Backup Mounting Kit
P/N: 69C.30.03.33.02
Quantity: _____



10-3/4" -40k Backup
P/N: 86B.40.01.01
Quantity: _____

Accessories for Stand Alone Tong



Lift Cylinder Assembly
P/N: 200276
Quantity: _____

Tension Load Cell
36" Handle, 40k Rated
P/N: 19-207400-150-SPT
Quantity: _____



Spring Hanger, 2000#
P/N: 11.85.000.00
Quantity: _____



Lift Cylinder Assembly
P/N: 200276
Quantity: _____

Compression Load Cell
36" Handle, 40k Rated
P/N: 19-207120-141-SPT
Quantity: _____

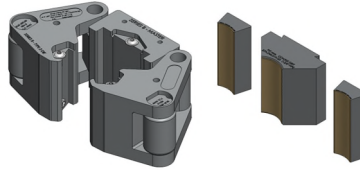


Spring Hanger, 3000#
P/N: 11.85.000.01
Quantity: _____

Tong Jaw and Die Carrier Selection

WRAP AROUND TONG JAW & DIE SELECTIONS			
PIPE SIZE	DIE KIT PART NUMBER (COARSE GRIT)	AVAILABILITY	QTY. TO ORDER
2.38" thru 3.50"	20.061.028.WR KIT	☑	
	2-3/8" 27A.061.019.GO KIT	☑	
	2-7/8" 27A.061.023.GO KIT	☑	
	3-1/2" 27A.061.028.GO KIT	☑	

☑ = AVAILABLE ; ☒ = MADE TO ORDER



TONG JAW SELECTIONS (Dressed with Coarse Grit Dies)			
PIPE SIZE	JAW KIT PART NUMBER	AVAILABILITY	QTY. TO ORDER
3-1/2"	20.061.028.G1 3JAW KIT	☒	
4"	20.061.032.G1 3JAW KIT	☑	
4-1/2"	20.061.036.G1 3JAW KIT	☑	
5"	20.061.040.G1 3JAW KIT	☑	
5-1/2"	20.061.044.G1 3JAW KIT	☑	
6"	20.061.048.G1 3JAW KIT	☑	
6-5/8"	20.061.053.G1 3JAW KIT	☑	
7"	20.061.056.G1 3JAW KIT	☑	
7-5/8"	20.061.061.G1 3JAW KIT	☑	

☑ = AVAILABLE ; ☒ = MADE TO ORDER



BACKUP DIE CARRIER SELECTIONS (Dressed with Coarse Grit Dies)			
PIPE SIZE	DIE CARRIER KIT PART NUMBER	AVAILABILITY	QTY. TO ORDER
2-3/8"	26.086.019.GO KIT	☒	
2-7/8"	26.086.023.GO KIT	☒	
3-1/2"	26.086.028.GO KIT	☒	
4"	26.086.032.GO KIT	☒	
4-1/2"	26.086.036.GO KIT	☒	
5"	26.086.040.GO KIT	☑	
5-1/2"	26.086.044.GO KIT	☑	
6"	26.086.048.GO KIT	☑	
6-5/8"	26.086.053.GO KIT	☒	
7"	26.086.056.GO KIT	☑	
7-5/8"	26.086.061.GO KIT	☑	
8-5/8"	26.086.069.GO KIT	☑	
9-5/8"	26.086.077.GO KIT	☑	
9-7/8"	26.086.079.GO KIT	☒	

☑ = AVAILABLE ; ☒ = MADE TO ORDER

For complete listing of Tong Jaw Availability and Die Carrier Availability refer to "Jaw Reference Manual" available on the Starr Power Tongs Portal.